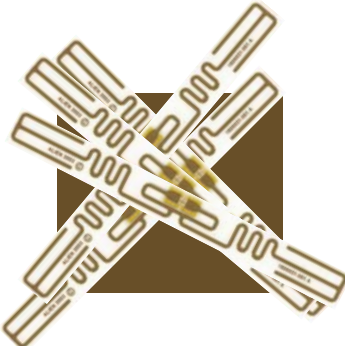


RFID Applicator

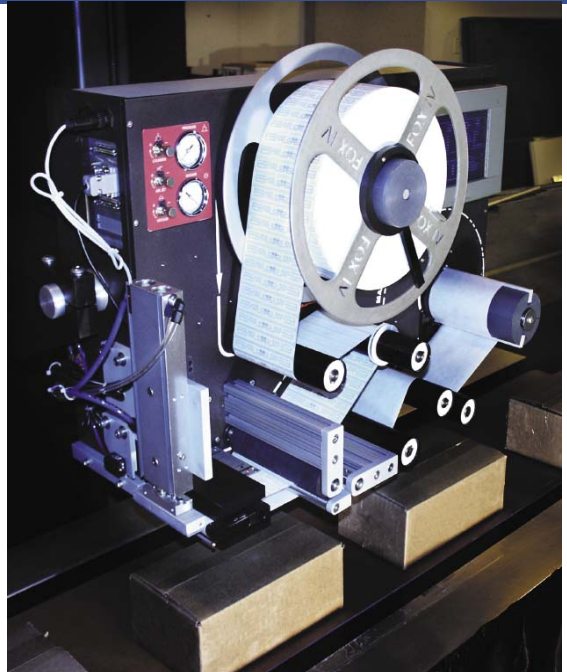
paragondsi.com



*The 1000^e SM supports
Alien Squiggle 64 bit and
96 bit tags.*

FOX IV 1000^e SM RFID Tag/Inlay Applicator

The 1000e SM RFID Label/Inlay applicator, with its fully integrated PC for maximized control and versatility, has a color touch screen that allows the operator to edit data, control processes, run diagnostics, change setups, and track tags that aren't coded, verified and applied. It can be operated in a manual or automatic mode: manual mode employs an internal database wherein data can be edited, added, deleted right on the labeler's touch screen; automatic mode is for integration with new or existing systems and middleware to maximize production and versatility. In automatic mode, the system is so easy and sophisticated that random products on the conveyor, all with different bar codes can have the bar codes scanned, read and correlated with the correct RFID tag code, verified and applied without any production delays.



Featuring:

- Integrated Windows 2000-Based PC with 6.4" VGA 640 x 480 pixel Display
- "Dead Tag" Management eliminates dead tags prior to application
- Operational modes support Read/Write/Read/Apply
- Writes to various 64 or 96 bit tag manufacturers at UHF Frequencies
- Communication methods: Serial, Ethernet 10/100
- Software options include product management, applicator remote control, SMART SCAN, and other custom packages.

Paragon
Data Systems, Inc.

FOX IV 1000^e SM

RFID Tag/Inlay Applicator



- RFID read/write mechanism-UHF, other frequencies available. Writes to 64- or 96-bit tag manufacturers at UHF frequencies.
- High-tolerance, heat-treated, anodized, machined aluminum centerwall construction for stable, balanced rugged 24/7 operation.
- Silk-screened supply paths for easy media changes and error-free threading and Dynamic Tension Control rewind system eliminates web breakage.
- 3 inch ID by 12 inch OD maximum supply size; 5 inch web width.
- “Dead Tag” management system ensuring that only “live” or “good” labels are applied to product. Dead labels remain on the label backing and are not applied. Tracks statistics on tags written to and number of failed tags. Can communicate with external RFID validation stations.
- Application methods: tamp and touch-blow. Applicator pads include: Soft pad and contoured hard (matches RFID chip location).
- SOFT-TOUCH roller guide system can handle fan-fold or roll stock AND eliminates the need for expensive polyethylene label liners.
- Auto-pressurization system with micron air filter. Continuously pressurized to provide cooling and keep internal components dust free.
- Options include: FOX IV environmental enclosures for dust, wash down, extreme temperatures), a variety of application methods, I/O packages, lock-out enclosures.
- Utilities: 115/220 V, 48/62 Hz Electric; 80 to 100 psi Air; 41 to 104 degrees F non-condensing temperatures.

Optional Software:

Box Management Software to manage and track product and label placement.

Applicator Control Software to allow operator control, setup, diagnostics and database management.

SMART-SCAN Software to scan existing bar codes, access database, write corresponding RFID tag, and apply tag to product.